

Performance Series



UNIVERSAL IMAGING  
SEE THE DIFFERENCE™

SEE THE DIFFERENCE™



Setting the standard for  
**VETERINARY ULTRASOUND**

### PERFORMANCE SERIES

The next generation in portable ultrasound, offering veterinary practices the features and functionality of a large cart-based system in a mobile, go-anywhere package.

## The Universal Performance Series sets new standards in leading-edge imaging performance and efficiency.

The Universal Performance Series is focused on bringing you the best images possible. This series is designed with an expansive digital beamformer to provide exceptional image quality, resulting in crystal clear images which enable you to make a confident diagnosis on a wide variety of patients.

From abdominal volumetric 4D with superior rendering capabilities, to MSK and cardiovascular exams including multiplane transesophageal echocardiography (TEE), the superior imaging and ease-of-use performance make the Universal Performance Series an outstanding value. Customized education and training packages are also included for further enhancement.

# ADVANCED FEATURES TO DELIVER OPTIMAL IMAGE QUALITY ON A WIDE VARIETY OF PATIENTS

### **Automatic Tissue Optimization Technology (ATO)**

and M-Tuning (1-button scanning) deliver ease-of-use and time savings by automatically adjusting parameters to display the optimal image quality for the type of tissue being imaged.

**Complete Doppler Capabilities** including Color Flow, Pulsed Wave Spectral Doppler, Steerable Continuous Wave Doppler and Power Doppler.

**Multi-parameter Compound Imaging** combines multiple coplanar images captured from different beam angles to form an integrated image.

**Steerable M Mode** allows for precise axis positioning, resulting in extremely accurate measurements.

**Panoramic Imaging** produces an ultra-wide field of view, providing maximum information on tissue and lesions.

**U-scan Technology**, the latest advance in Speckle Reduction Technology, reduces noise while increasing border definition and diagnostic confidence.

**E-flow** uses Advanced Doppler Technology to capture low-velocity blood flow signals, and increase color sensitivity.

**Tissue Doppler Imaging** enables quantitative assessment of left ventricular systolic and diastolic function.

**Super High Density Transducers** provide more information in every image enabling the visualization of complex anatomy with superior detail and precision.

**Pulse Inversion Harmonics** offers numerous advantages over conventional imaging, including improved contrast resolution, reduced noise and clutter, improved lateral resolution, reduced slice thickness, reduced artifacts and, in many instances, improved signal-to-noise ratio.



### **Easy Image Transfer**

The Universal Performance Series allows for images to be transferred via a USB Drive, DICOM®, or over a network.



# S9

## ADVANCED FEATURES FOR UNPARALLELED IMAGE QUALITY

The S9 features the most innovative user-interface and design of all compact ultrasounds on the market. With a full touchscreen interface, the S9 is our most versatile and sophisticated premium portable ultrasound system. The brilliant touchscreen is responsive, ergonomic, and the only one of its kind. Image+ Enhancement enables the S9 to provide premium abdominal and cardiovascular imaging, as well as superb images for nearly every other modality.

### Multi-function, Powerful Platform

The S9 is embedded with leading-edge imaging technologies, which have significantly elevated the imaging quality to a new level and revealed more diagnostic information to the clinician.

The S9 is capable of not only rendering superior quality 4D images, but is also excellent for cardiac applications, with advanced imaging techniques including Pulse Inversion Harmonics, E-flow, and Tissue Doppler Imaging (TDI). Working with S9, you will see patient anatomy more clearly, diagnose more confidently, and work more comfortably.

# S2

## COMPREHENSIVE FUNCTIONS FOR STREAMLINED VETERINARY EXAMS



The S2 is a color Doppler system with a practical design and stable performance that goes beyond your expectations, but not your budget.

With advanced features usually found only in higher-end systems the S2 is the perfect system for general practices that require enhanced image quality, but only have basic Doppler needs. The image optimization features of the S2 keep exam times down and image quality high.

The S2 is focused on bringing you the best images possible. Designed with an expansive digital beamformer to provide exceptional image quality, resulting in crystal-clear images which enable you to make a confident diagnosis on a wide variety of patients.

Complete working modes, outstanding 2D performance, sensitive blood flow imaging, and 4D imaging technology give the S2 a class-leading feature set.

### Upgraded Workflow, Smart Data Management

**Intuitive user interface:** clear menu-driven interface designed for convenient workflow.

**Define your own work-style:** fully customizable work settings for data table/graph, function keys, icons, and measurement formulas.

**Clipboard function:** quick image review during scanning.

**Smart data management:** retrieve, review and report with easy access to image and data storage.

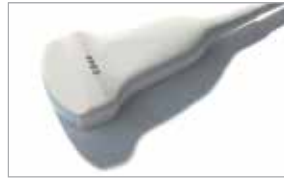
- 15" High Resolution Monitor
- Rechargeable Lithium Battery
- Two Transducer Sockets
- Ergonomic Cart (Optional)
- DICOM® 3.0 Connectivity
- Optimized Workflow
- U-scan Workflow
- Steerable M Mode
- Tissue Harmonic Reduction
- Automatic Imaging (THI)
- Compound Tissue Optimization
- Panoramic Imaging
- Trapezoidal Imaging
- 4D Imaging
- Pulsed Wave Doppler
- Continuous Wave Doppler
- Pulse Inversion Doppler
- TEI Index
- Tissue Doppler Harmonics
- Tissue Doppler Imaging (TDI)
- Transesophageal Echo (TEE)
- Stress Echo
- Elastography
- E-flow
- Super High Density Transducers
- Contrast Imaging
- Remote Control
- 13.3" Smart Touch Panel
- Image+ Enhancement



# Transducers



**LINEAR "T":**  
15.0-5.0 MHz (S9)  
12.0-5.0 MHz (S2)  
• Small parts & MSK  
• High res. abdominal  
AVAILABLE ON: S2, S9



**CONVEX 20R:**  
5.0-2.0 MHz  
• Deep penetration  
• Equine abdominal  
• Small animal  
AVAILABLE ON: S2, S9



**CONVEX 40R:**  
5.0-2.0 MHz  
• Deep penetration  
• Equine abdominal  
• Small animal  
AVAILABLE ON: S9



**MICROCONVEX:**  
13.0-4.0 MHz (S9)  
9.0-3.0 MHz (S2)  
With a wide frequency range the microconvex is the best multipurpose transducer available and is perfect for all abdominal and routine cardiac imaging.  
AVAILABLE ON: S2, S9



**PHASED ARRAY:**  
4.0-2.0 MHz  
• Equine cardiac  
• Deep penetration  
• Large canine  
AVAILABLE ON: S2, S9



**PHASED ARRAY:**  
11.0-4.0 MHz  
• Cardiac  
• Small animal  
• Canine/feline  
AVAILABLE ON: S2, S9



**HIGH FREQUENCY PHASED ARRAY:**  
16.0-4.0 MHz  
• Cardiac  
• Feline/exotic  
AVAILABLE ON: S9



**LINEAR RECTAL:**  
10.0-5.0 MHz  
• Large animal  
• High resolution  
• Rectal probe  
AVAILABLE ON: S2, S9



**MULTI-PLANE PHASED ARRAY TEE:**  
7.0-4.0 MHz  
• Transesophageal  
• High resolution  
AVAILABLE ON: S9

# Cloud-based Storage & Access Anytime, Anywhere

Universal Imaging is proud to offer innovative cloud storage to increase your practice's productivity and efficiency.

- Fully automated and always on.
- Share and view your data with any mobile device or web browser.
- Viewing software is intuitive, powerful and uniquely designed for the veterinary practice.
- Full off-site emergency data recovery.
- Seamless integration with digital radiography, MRI, CT, ultrasound, and any other DICOM® modality.



Access to your studies wherever you are, whenever you need them.

# MyRad Digital Radiography

THE COMPLETE DIGITAL RADIOGRAPHY SOLUTION ONLY FROM UNIVERSAL IMAGING



**AED/Smart Sync technology gives you greater flexibility by automatically detecting any x-ray source without the need to manually sync to each specific generator/source.**

**Easy Retrofit:** The Canon and FujiFilm 14" x 17" flat panels will fit any standard Bucky tray without modification, allowing for use with your current x-ray table.

**Single Click Protocol:** Powerful exam auto-sequence software enables a single click selection of a set of protocols required for a specific examination, thus streamlining study order creation.

**Immediate Results:** Images are available approximately 3 seconds after capture and can be immediately transmitted over the network and Cloud for fast and easy data sharing. Features seamless DICOM® integration.

**Wired or Wireless Options:** To meet the needs of your practice, Digital Flat Panels are available in both wired and fully wireless configurations.

## OPTIMIZED WORKFLOW

A seamless user experience, only available with MyRad from Universal Imaging.



# MyRad Equine

ULTRA-LIGHT DIGITAL RADIOGRAPHY FOR THE EQUINE PRACTITIONER



MyRad Equine with 11" x 14" Wireless Digital Flat Panel powered by Canon®

**AED/Smart Sync technology gives you greater flexibility by automatically detecting any x-ray source without the need to manually sync to each specific generator/source.**

**Crystal Clear Images:** Only MyRad incorporates our exclusive software configuration for the best image quality on the market.

**Productive:** Pre-programmed with equine-specific protocols, quick processing with image acquisition in approximately 3 seconds and seamless DICOM® integration.

**Wired or Wireless Options:** Coupled with a wireless x-ray generator, MyRad Equine is available in both single-wire or fully wireless configurations.

**Five configurations available. Complete systems starting at 15lbs.** (without generator)

## Available Wireless Flat Panels:

- 14" x 17": Canon 701C • FujiFilm C35i/G35i
- 11" x 14": Canon 801C
- 10" x 12": FujiFilm C24i

## Available Semi-wireless Flat Panels:

- 14" x 17": Canon 501C/501G • FujiFilm C35s/G35s
- 9" x 11": Canon 60C/60G

SEE THE DIFFERENCE™

One company for all of your imaging needs.

- Proven support
- Unmatched customer service
- Over 41 years in the industry
- Over 18,000 veterinary customers
- Leading-edge ultrasound systems
- Ultra-lite radiography solutions
- PACS and Cloud storage
- Over 50 education courses per year



**UNIVERSAL IMAGING**  
SEE THE DIFFERENCE™

Universal Imaging - A Division of UMS Solutions, Inc.  
299 Adams Street  
Bedford Hills, NY 10507  
Phone: 800.842.0607 / 914.666.6200  
Fax: 914.666.2454  
E-Mail: [Sales@UniversallImagingInc.com](mailto:Sales@UniversallImagingInc.com)  
Web: [www.UniversallImagingInc.com](http://www.UniversallImagingInc.com)

© 2015 UMS Solutions Inc

Specifications subject to change without notice. DICOM® is a registered trademark of the National Electrical Manufacturers Association. All other trademarks are the property of their respective owners. Product images shown may vary slightly from the actual product. Universal Imaging is not responsible for any error, omission, misrepresentation, or misstatement contained in these pages.