

SEE THE DIFFERENCE™



UNIVERSAL IMAGING
SEE THE DIFFERENCE™



A feature-rich system in a
COMPACT AND AFFORDABLE PACKAGE

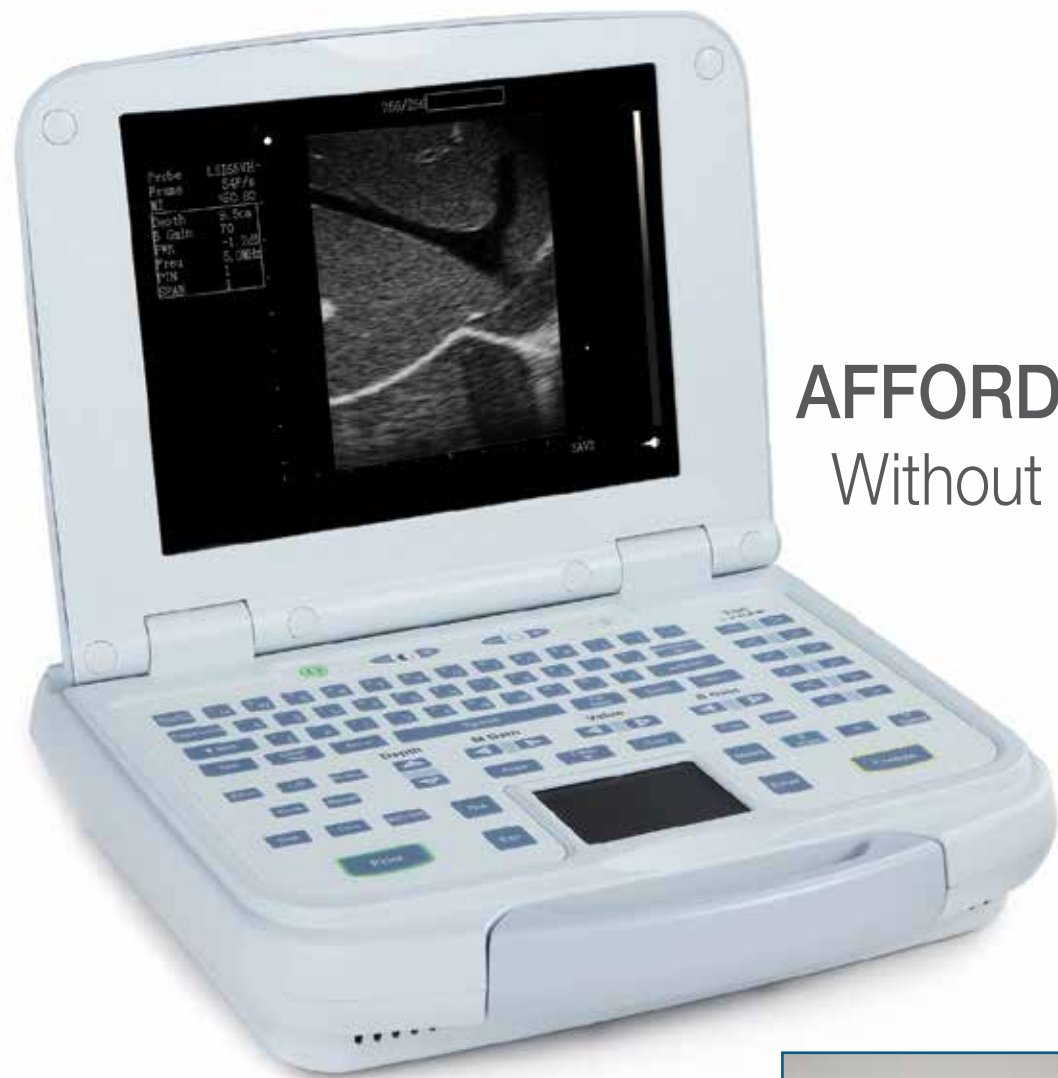
UMS900 NEO

The UMS900 Neo delivers on the promise of a powerful and versatile machine in a portable configuration.

UMS900 NEO

The UMS900 Neo is an ultra-lite, mobile ultrasound system designed for use in a broad range of veterinary applications. Broadband imaging, precise control and dedicated veterinary software make it the ideal choice for mobile small and large animal applications.

The UMS900 Neo is an advanced, easy-to-use veterinary ultrasound system ideal for practices on-the-go.



AFFORDABILITY
Without Compromise.



Veterinary Software

EQUINE	BPD, GSD, VOL-B, ANGLE
BOVINE	BPD, BD, CRL, TD, VOL-B, ANGLE
OVINE	BPD, USD, CRL, TD, VOL-B, ANGLE
CANINE	GSD, CRL, HD, BD, VOL-B, ANGLE
FELINE	HD, BD, VOL-B

On-board veterinary software enables precise measurements and calculations.

System Features

- 10.4-inch high resolution LCD monitor
- 6 TGC controls
- Water resistant keypad with track pad
- Rechargeable battery with up to 2 hour run time
- Programmable presets
- Broadband multi-frequency probes
- AC adapter / vehicle adapter
- Rectal probe with on-cord freeze button
- Hard shell travel case, OPU extender for oocyte retrieval, bovine harness and viewing goggles

Imaging Features

- B, 2B & 4B mode, B+M mode, M mode
- New Beam former and transducer technology
- One-key image optimization
- Enhanced image quality for MSK and reproduction studies
- Cineloop (instant image replay)

Image Transfer and Reporting Features

- Veterinary patient ID and report pages
- Equine/bovine programmable OB charts
- Export in TIFF, BMP, JPEG, AVI (optional formats)
- Easy store to USB for efficient image transfer
- RJ 45 network card, USB and DICOM® (optional)
- Auto-calculation percentage of tendon damage

Transducers

The UMS900 Neo offers a full line of innovative probes to help simplify advanced scanning procedures.



Micro-convex
C6115H 7.5 to 4.5 MHz

- Abdominal
- Small parts



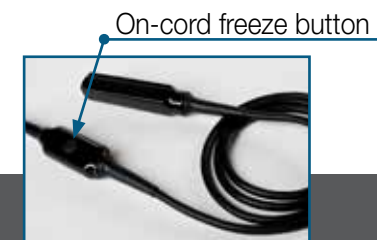
Convex
C3160H 5.0 to 2.5 MHz

- Large animal abdominal
- Deep penetration
- Musculoskeletal



Linear
L7138H 10.0 to 5.0 MHz

- Tendon diagnosis
- Superficial parts on small animals



Wide band linear rectal
L5165VH 10.0 to 5.0 MHz

- Veterinary rectal



Small ruminant prostate
U5150H 6.5 to 3.5 MHz

- Veterinary prostate



OPU Extender
For use with **C6115H**
Needle guide device for oocyte aspiration.

SEE THE DIFFERENCE™

One company for all of your imaging needs.

- Proven support
- Unmatched customer service
- Over 40 years in the industry
- Over 18,000 veterinary customers
- Leading-edge ultrasound systems
- Ultra-light radiography solutions
- PACS and Cloud storage
- Over 50 education courses per year



UNIVERSAL IMAGING
SEE THE DIFFERENCE™

Universal Imaging - A Division of UMS Solutions, Inc.
299 Adams Street
Bedford Hills, NY 10507
Phone: 800.842.0607 / 914.666.6200
Fax: 914.666.2454
E-Mail: Sales@UniversallImagingInc.com
Web: www.UniversallImagingInc.com

© 2014 UMS Solutions Inc

Specifications subject to change without notice.
DICOM® is a registered trademark of the National
Electrical Manufacturers Association.
All other trademarks are the property of their
respective owners.